



**Water Monitoring Result at M5B - Central Cooling Water Intake Group
Mid-Flood Tide**

Date	Time	Weather Condition	Sampling Depth		Water Temperature			pH			Salinity			DO Saturation		DO		Turbidity		Suspended Solids				
					°C			-			ppt			%		mg/L		NTU		mg/L				
			m	Value	Average	Value	Average	Value	Average	Value	Average	Value	Average	Value	Average	Value	Average	Value	Average	Value	Average	Value	Average	
1/4/19	16:36	Cloudy	Middle	3.5	21.70	21.70	21.70	7.90	7.90	7.91	34.14	34.14	34.14	94.2	94.2	94.4	6.79	6.79	6.80	5.04	5.05	5.05	3	3.50
	16:38		Middle	3.5	21.70	21.70		7.92	7.92		34.14	34.14		94.4	94.6		6.81	6.82		5.07	5.04		4	
3/4/19	17:45	Fine	Middle	4.0	23.50	23.50	23.55	7.76	7.76	7.76	33.93	33.93	33.93	95.2	95.6	95.1	6.66	6.68	6.64	2.98	2.98	2.98	4	4.00
	17:47		Middle	4.0	23.60	23.60		7.76	7.76		33.92	33.92		94.6	95.0		6.60	6.63		2.99	2.97		4	
6/4/19	6:00	Foggy	Middle	3.0	22.70	22.70	22.70	8.38	8.38	8.38	32.07	32.07	32.07	79.4	80.2	80.1	5.69	5.75	5.74	2.61	2.58	2.60	3	3.00
	6:01		Middle	3.0	22.70	22.70		8.38	8.38		32.07	32.07		80.2	80.7		5.75	5.78		2.56	2.63		3	
8/4/19	5:06	Cloudy	Middle	3.0	24.10	24.10	24.10	8.33	8.33	8.33	31.08	31.08	31.08	77.3	77.0	77.1	5.44	5.41	5.42	2.74	2.45	2.47	2	2.50
	5:07		Middle	3.0	24.10	24.10		8.33	8.33		31.08	31.08		76.9	77.1		5.41	5.42		2.42	2.28		3	
10/4/19	8:40	Fine	Middle	3.0	24.40	24.40	24.45	8.13	8.13	8.14	31.45	31.40	31.41	91.7	90.9	90.5	6.40	6.34	6.32	1.12	1.13	1.14	<2	<2
	8:42		Middle	3.0	24.50	24.50		8.14	8.14		31.40	31.40		90.0	89.5		6.28	6.24		1.14	1.16		<2	
12/4/19	8:50	Cloudy	Middle	4.0	23.40	23.40	23.45	7.24	7.24	7.27	31.51	31.51	31.51	93.2	92.6	92.9	6.61	6.57	6.59	1.83	1.86	1.86	2	2.00
	8:52		Middle	4.0	23.50	23.50		7.29	7.29		31.51	31.51		92.4	93.3		6.56	6.62		1.87	1.87		2	
15/4/19	13:35	Cloudy	Middle	4.0	22.80	22.80	22.80	7.29	7.29	7.30	32.51	32.51	32.51	93.8	94.2	94.0	6.69	6.72	6.71	2.40	2.40	2.41	12	11.50
	13:37		Middle	4.0	22.80	22.80		7.31	7.31		32.51	32.51		93.6	94.3		6.69	6.72		2.41	2.41		11	
17/4/19	15:20	Fine	Middle	3.5	24.50	24.50	24.55	7.56	7.56	7.56	32.01	32.01	32.01	93.9	94.0	93.6	6.51	6.52	6.49	3.29	3.29	3.29	4	4.00
	15:22		Middle	3.5	24.60	24.60		7.56	7.56		32.01	32.01		93.0	93.5		6.45	6.48		3.28	3.30		4	
19/4/19	-	Amber Rainstorm Warning	Middle	-	-	-	-	-	-	-	-	-	-	-	-	-	-	-	-	-	-	-	-	-
	-		Middle	-	-	-		-	-		-	-		-	-		-	-		-	-		-	
23/4/19	7:55	Fine	Middle	4.0	24.80	24.80	24.85	7.47	7.47	7.48	29.49	29.49	29.49	87.5	87.0	87.7	6.11	6.06	6.12	3.10	3.08	3.10	3	3.00
	7:57		Middle	4.0	24.90	24.90		7.49	7.49		29.49	29.49		88.0	88.1		6.16	6.16		3.11	3.11		3	
25/4/19	8:50	Fine	Middle	4.0	25.50	25.50	25.55	7.36	7.36	7.36	29.76	29.76	29.76	91.5	91.8	92.6	6.32	6.34	6.40	2.83	2.84	2.89	5	4.50
	8:52		Middle	4.0	25.60	25.60		7.35	7.35		29.76	29.76		93.1	94.1		6.43	6.50		2.94	2.96		4	
27/4/19	19:25	Cloudy	Middle	3.0	22.80	22.80	22.80	7.99	7.99	7.99	31.74	31.74	31.74	87.7	89.7	88.5	5.87	6.05	5.93	2.36	2.24	2.22	3	3.50
	19:26		Middle	3.0	22.80	22.80		7.99	7.99		31.74	31.74		88.5	87.9		5.93	5.88		2.19	2.09		4	
30/4/19	14:35	Cloudy	Middle	4.0	25.90	25.90	25.95	7.14	7.14	7.15	29.66	29.66	29.66	94.9	95.2	95.1	6.52	6.53	6.52	1.97	1.99	1.97	3	3.00
	14:37		Middle	4.0	26.00	26.00		7.16	7.16		29.65	29.65		95.1	95.1		6.52	6.52		1.99	1.94		3	

Remarks:
Single underline denotes exceedance over Action Level.
Double underline denotes exceedance over Limit Level.



**Water Monitoring Result at Culvert J - Reference Station
Mid-Flood Tide**

Date	Time	Weather Condition	Sampling Depth		Water Temperature			pH			Salinity			DO Saturation		DO		Turbidity		Suspended Solids				
					°C			-			ppt			%		mg/L		NTU		mg/L				
			m	Value	Average	Value	Average	Value	Average	Value	Average	Value	Average	Value	Average	Value	Average	Value	Average	Value	Average			
1/4/19	16:30	Cloudy	Middle	3.5	21.90	21.90	21.90	7.83	7.83	7.85	34.15	34.15	34.16	95.7	95.1	95.2	6.87	6.82	6.84	4.03	4.08	4.08	4	3.50
	16:32		Middle	3.5	21.90	21.90		7.87	7.87		34.16	34.16		95.1	95.0		6.83	6.82		4.10	4.12		3	
3/4/19	17:40	Fine	Middle	3.5	22.80	22.80	22.85	7.79	7.79	7.80	33.89	33.89	33.90	91.0	90.9	90.5	6.43	6.42	6.40	3.41	3.41	3.42	6	6.50
	17:42		Middle	3.5	22.90	22.90		7.80	7.80		33.90	33.90		90.3	89.9		6.38	6.35		3.43	3.44		7	
6/4/19	6:08	Foggy	Middle	2.5	22.70	22.70	22.70	8.40	8.40	8.40	31.20	31.20	31.20	78.0	78.5	78.8	5.62	5.66	5.68	3.17	3.44	3.37	4	3.50
	6:09		Middle	2.5	22.70	22.70		8.40	8.40		31.20	31.20		79.4	79.2		5.72	5.71		3.65	3.23		3	
8/4/19	5:14	Cloudy	Middle	2.5	24.10	24.10	24.10	8.38	8.38	8.38	30.12	30.12	30.12	76.4	76.7	76.8	5.40	5.42	5.42	3.56	3.37	3.37	3	3.00
	5:15		Middle	2.5	24.10	24.10		8.38	8.38		30.12	30.12		76.9	77.0		5.42	5.45		3.30	3.24		<2	
10/4/19	8:30	Fine	Middle	3.0	24.70	24.70	24.85	8.09	8.09	8.10	30.81	30.91	30.89	93.1	92.3	92.3	6.47	6.41	6.41	2.21	2.21	2.21	3	3.00
	8:32		Middle	3.0	25.00	25.00		8.11	8.11		30.92	30.92		91.8	92.0		6.38	6.38		2.21	2.22		3	
12/4/19	8:45	Cloudy	Middle	3.5	23.70	23.70	23.70	7.19	7.19	7.20	29.94	29.94	29.94	87.6	87.8	87.5	6.25	6.26	6.24	2.31	2.29	2.29	2	2.50
	8:47		Middle	3.5	23.70	23.70		7.20	7.20		29.93	29.93		87.1	87.3		6.21	6.23		2.28	2.28		3	
15/4/19	13:30	Cloudy	Middle	3.5	23.00	23.00	23.05	7.20	7.20	7.21	31.87	31.87	31.87	93.3	93.5	93.4	6.65	6.66	6.66	2.35	2.35	2.33	3	3.00
	13:32		Middle	3.5	23.10	23.10		7.21	7.21		31.87	31.87		93.4	93.5		6.65	6.66		2.31	2.30		3	
17/4/19	15:15	Fine	Middle	3.0	25.30	25.30	25.35	7.53	7.53	7.54	31.70	31.70	31.70	87.9	88.0	87.3	6.03	6.04	5.99	3.35	3.37	3.37	<2	<2
	15:17		Middle	3.0	25.40	25.40		7.56	7.54		31.70	31.70		86.5	86.7		5.93	5.94		3.38	3.37		<2	
19/4/19	-	Amber Rainstorm Warning	Middle	-	-	-	-	-	-	-	-	-	-	-	-	-	-	-	-	-	-	-	-	-
	-		Middle	-	-	-		-	-		-	-		-	-		-	-		-	-		-	
23/4/19	7:50	Fine	Middle	3.5	24.90	24.90	24.95	7.48	7.48	7.48	26.33	26.33	26.33	83.0	83.0	82.8	5.91	5.91	5.89	9.55	9.55	9.55	3	3.00
	7:52		Middle	3.5	25.00	25.00		7.48	7.48		26.33	26.33		82.6	82.5		5.88	5.87		9.54	9.54		3	
25/4/19	8:45	Fine	Middle	3.5	26.00	26.00	26.05	7.26	7.26	7.26	29.04	29.04	29.04	87.3	88.2	87.4	6.01	6.06	6.01	1.70	1.69	1.69	4	3.50
	8:47		Middle	3.5	26.10	26.10		7.26	7.26		29.03	29.03		86.5	87.6		5.94	6.02		1.69	1.69		3	
27/4/19	19:34	Cloudy	Middle	2.5	22.90	22.90	22.90	8.03	8.03	8.03	27.61	27.61	27.61	84.2	86.1	85.5	5.77	5.93	5.86	1.88	1.96	1.87	5	5.00
	19:35		Middle	2.5	22.90	22.90		8.03	8.03		27.61	27.61		84.5	87.0		5.79	5.95		1.92	1.73		5	
30/4/19	14:30	Cloudy	Middle	3.5	25.80	25.80	25.85	7.29	7.29	7.31	28.42	28.42	28.42	92.6	92.7	92.8	6.41	6.42	6.43	1.95	1.99	1.97	5	5.00
	14:32		Middle	3.5	25.90	25.90		7.33	7.33		28.42	28.42		92.9	92.9		6.44	6.43		1.96	1.97		5	

Remarks:
Single underline denotes exceedance over Action Level.
Double underline denotes exceedance over Limit Level.



**Water Monitoring Result at M5B - Central Colling Water Intake Group
Mid-Ebb Tide**

Date	Time	Weather Condition	Sampling Depth		Water Temperature			pH			Salinity			DO Saturation		DO		Turbidity		Suspended Solids				
					°C		-		ppt		%		mg/L		NTU		mg/L							
					Value	Average	Value	Average	Value	Average	Value	Average	Value	Average	Value	Average	Value	Average	Value	Average				
1/4/19	19:15	Cloudy	Middle	3.5	21.20	21.20	21.20	8.44	8.44	8.44	33.05	33.05	33.05	86.7	86.3	86.8	6.35	6.32	6.35	6.89	6.87	6.69	5	5.00
	19:16		Middle	3.5	21.20	21.20		8.44	8.44		33.05	33.05		87.2	87.0		6.35	6.37		6.50	6.48		5	
3/4/19	11:00	Fine	Middle	4.0	22.90	22.90	22.90	7.60	7.60	7.62	34.00	34.00	34.00	94.5	94.6	95.1	6.67	6.68	6.71	2.86	2.91	2.92	3	3.00
	11:02		Middle	4.0	22.90	22.90		7.64	7.64		34.00	34.00		95.5	95.6		6.74	6.74		2.95	2.94		3	
6/4/19	13:01	Fine	Middle	3.5	24.70	24.70	24.85	6.87	6.87	6.93	32.80	32.80	32.80	86.3	84.5	85.4	5.94	5.81	5.87	1.70	1.70	1.68	3	3.50
	13:03		Middle	3.5	25.00	25.00		6.99	6.99		32.79	32.79		85.1	85.7		5.85	5.89		1.68	1.63		4	
8/4/19	15:15	Fine	Middle	3.0	25.30	25.30	25.30	8.10	8.10	8.10	32.13	32.13	32.13	77.7	81.9	81.2	5.32	5.60	5.55	3.06	3.06	3.06	2	3.00
	15:17		Middle	3.0	25.30	25.30		8.10	8.10		32.12	32.12		83.2	81.9		5.69	5.60		3.06	3.06		4	
10/4/19	14:45	Fine	Middle	3.0	27.30	27.30	27.60	8.14	8.14	8.15	30.99	30.99	30.99	99.2	99.4	99.4	6.58	6.59	6.59	3.06	3.00	2.98	<2	<2
	14:47		Middle	3.0	27.90	27.90		8.15	8.15		30.99	30.99		99.3	99.8		6.58	6.60		2.95	2.91		<2	
12/4/19	16:10	Cloudy	Middle	4.0	22.70	22.70	22.65	7.35	7.35	7.33	32.67	32.67	32.67	97.6	97.3	97.6	6.98	6.95	6.98	2.13	2.13	2.14	<2	<2
	16:12		Middle	4.0	22.60	22.60		7.31	7.31		32.66	32.66		97.6	97.7		6.98	6.99		2.14	2.16		<2	
15/4/19	19:15	Cloudy	Middle	3.5	22.10	22.10	22.10	7.68	7.68	7.68	33.47	33.47	33.47	92.5	91.7	91.5	6.65	6.59	6.58	3.48	3.50	3.48	4	4.50
	19:16		Middle	3.5	22.10	22.10		7.68	7.68		33.47	33.48		91.1	90.8		6.54	6.53		3.64	3.31		5	
17/4/19	10:35	Fine	Middle	3.5	23.80	23.80	23.85	7.15	7.15	7.18	32.48	32.48	32.48	92.3	92.7	93.0	6.48	6.49	6.51	3.72	3.75	3.75	<2	<2
	10:37		Middle	3.5	23.90	23.90		7.20	7.20		32.48	32.48		93.4	93.7		6.53	6.55		3.76	3.76		<2	
19/4/19	11:20	Fine	Middle	3.5	24.40	24.40	24.35	7.22	7.22	7.23	31.81	31.81	31.85	93.8	93.0	92.8	6.55	6.48	6.47	8.24	8.19	8.21	6	6.00
	11:22		Middle	3.5	24.30	24.30		7.23	7.23		31.89	31.89		92.3	92.0		6.43	6.41		8.19	8.20		6	
23/4/19	14:17	Fine	Middle	3.0	25.60	25.60	25.75	8.11	8.11	8.12	29.64	29.64	29.63	94.7	94.1	93.1	6.53	6.48	6.41	3.80	3.74	3.79	3	3.50
	14:19		Middle	3.0	25.90	25.90		8.13	8.13		29.62	29.62		92.3	91.1		6.36	6.27		3.75	3.87		4	
25/4/19	15:55	Fine	Middle	3.5	26.90	26.90	27.00	7.11	7.11	7.14	29.61	29.61	29.61	94.6	94.2	95.1	6.39	6.38	6.41	2.90	2.90	2.92	4	4.50
	15:57		Middle	3.5	27.10	27.10		7.17	7.17		29.61	29.61		95.8	95.7		6.44	6.44		2.94	2.95		5	
27/4/19	7:35	Cloudy	Middle	3.5	25.00	25.00	25.05	7.47	7.47	7.49	30.73	30.73	30.73	95.9	95.8	95.7	6.65	6.64	6.63	2.27	2.22	2.22	3	3.00
	7:37		Middle	3.5	25.10	25.10		7.50	7.50		30.73	30.73		95.6	95.6		6.62	6.62		2.21	2.18		3	
30/4/19	19:28	Cloudy	Middle	3.5	25.00	25.00	25.00	8.08	8.08	8.08	29.62	29.62	29.62	88.8	91.2	89.6	6.21	6.38	6.27	2.56	2.45	2.46	<2	2.00
	19:29		Middle	3.5	25.00	25.00		8.08	8.08		29.62	29.62		89.0	89.3		6.23	6.25		2.44	2.40		2	

Remarks:
Single underline denotes exceedance over Action Level.
Double underline denotes exceedance over Limit Level.



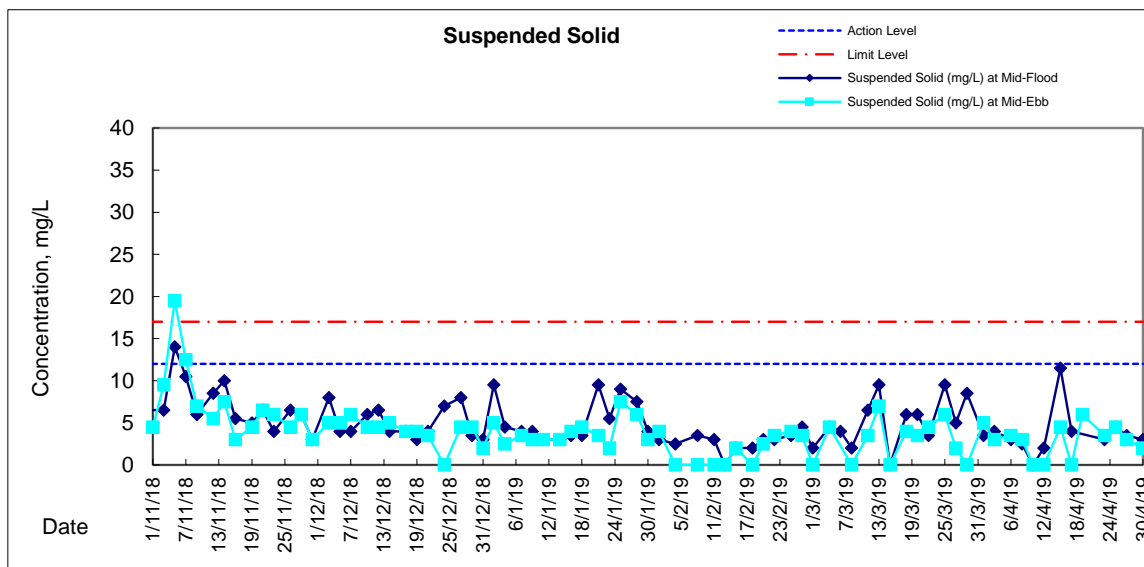
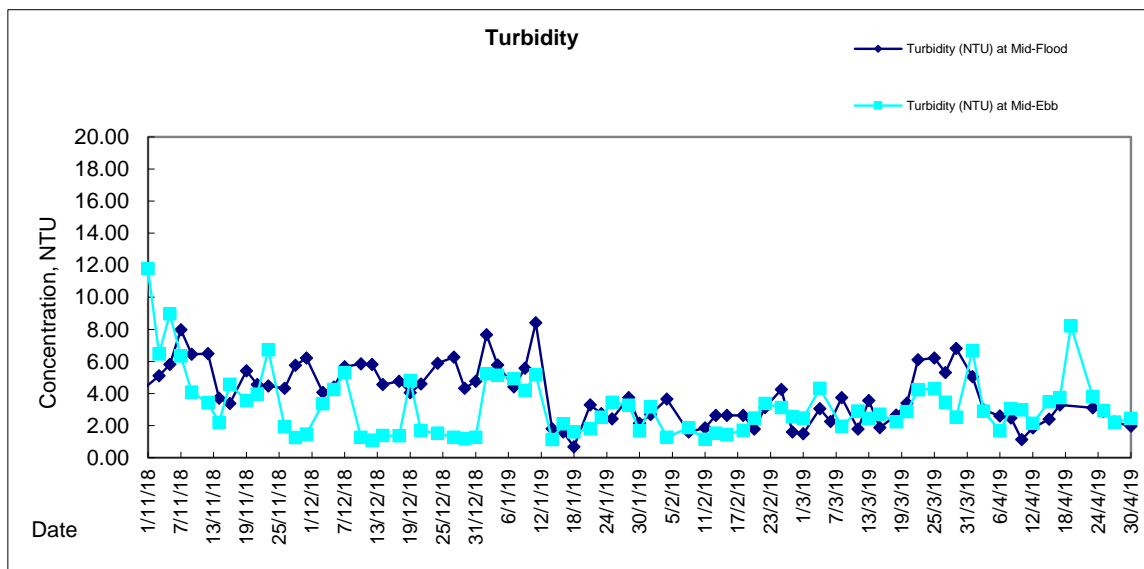
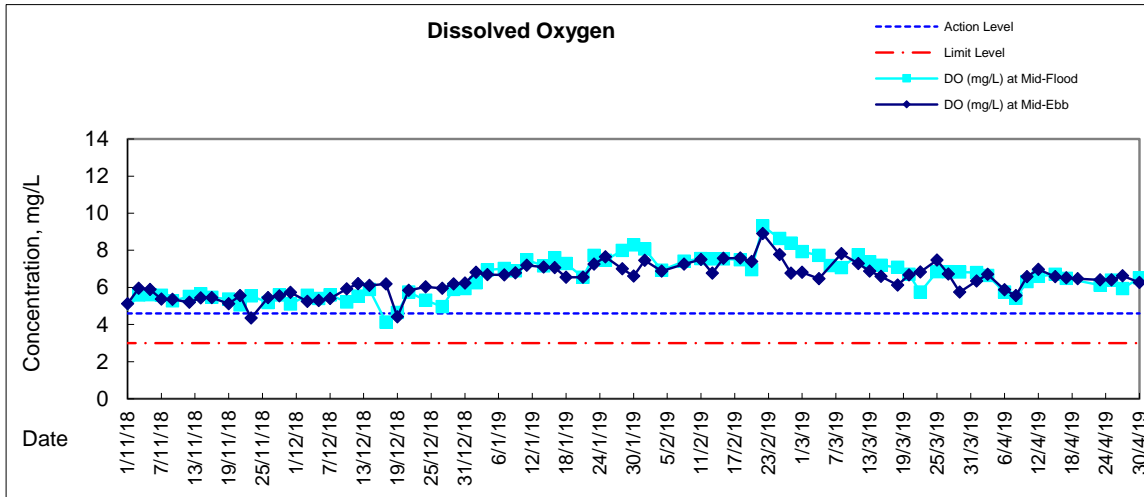
**Water Monitoring Result at Culvert J - Reference Station
Mid-Ebb Tide**

Date	Time	Weather Condition	Sampling Depth		Water Temperature			pH			Salinity			DO Saturation			DO			Turbidity			Suspended Solids	
					°C		-		ppt		%		mg/L		NTU		mg/L							
					Value	Average	Value	Average	Value	Average	Value	Average	Value	Average	Value	Average	Value	Average	Value	Average				
1/4/19	19:23	Cloudy	Middle	4	21.20	21.20	21.20	8.47	8.47	8.47	31.87	31.87	31.87	85.5	84.7	85.1	6.30	6.24	6.27	5.47	5.40	5.42	4	4.00
	19:24		Middle	4	21.20	21.20		8.47	8.47		31.87	31.87		85.2	85.0		6.28	6.26		5.41	5.38		4	
3/4/19	10:55	Fine	Middle	4	23.20	23.20	23.23	7.44	7.44	7.49	31.34	31.34	31.34	94.4	93.9	93.7	6.73	6.70	6.67	4.78	4.77	4.77	3	3.00
	10:57		Middle	4	23.30	23.20		7.53	7.53		31.33	31.33		93.0	93.3		6.62	6.64		4.76	4.76		3	
6/4/19	12:56	Fine	Middle	4	26.00	26.00	26.00	6.73	6.73	6.79	26.58	26.58	26.44	77.8	77.6	76.1	5.45	5.43	5.33	10.94	10.65	10.69	10	9.50
	12:58		Middle	4	26.00	26.00		6.84	6.84		26.29	26.29		75.1	74.0		5.25	5.17		10.59	10.58		9	
8/4/19	15:00	Fine	Middle	3	26.20	26.20	26.50	8.05	8.05	8.05	30.10	30.10	30.10	48.7	49.4	49.8	3.29	3.36	3.37	4.84	4.84	4.84	4	4.50
	15:02		Middle	3	26.80	26.80		8.05	8.05		30.10	30.10		50.4	50.6		3.40	3.41		4.84	4.84		5	
10/4/19	14:40	Fine	Middle	3	26.40	26.40	26.50	8.13	8.13	8.13	29.94	29.94	29.94	89.0	89.2	87.1	6.05	6.06	5.98	3.60	3.80	3.74	2	2.00
	14:42		Middle	3	26.60	26.60		8.13	8.13		29.94	29.94		85.1	85.1		6.01	5.78		3.80	3.75		2	
12/4/19	16:05	Cloudy	Middle	4	22.50	22.50	22.50	7.13	7.13	7.14	28.17	28.17	28.17	93.7	92.8	93.4	6.89	6.82	6.87	9.41	9.41	9.41	2	2.50
	16:07		Middle	4	22.50	22.50		7.14	7.14		28.17	28.17		93.5	93.5		6.88	6.88		9.41	9.42		3	
15/4/19	19:27	Cloudy	Middle	3	22.10	22.10	22.10	7.73	7.73	7.73	32.37	32.37	32.37	88.0	89.9	88.7	6.37	6.51	6.42	5.27	5.21	5.20	5	4.50
	19:28		Middle	3	22.10	22.10		7.73	7.73		32.37	32.37		88.4	88.5		6.40	6.41		5.17	5.14		4	
17/4/19	10:30	Fine	Middle	4	24.20	24.20	24.25	7.09	7.09	7.10	29.97	29.97	29.97	96.5	95.7	95.9	6.81	6.76	6.77	5.47	5.46	5.46	<2	<2
	10:32		Middle	4	24.30	24.30		7.11	7.11		29.97	29.97		95.7	95.7		6.75	6.75		5.47	5.45		<2	
19/4/19	11:15	Fine	Middle	4	24.80	24.80	24.85	7.08	7.08	7.09	30.32	30.32	30.32	95.5	95.8	95.4	6.66	6.68	6.64	5.20	5.10	5.16	4	3.50
	11:17		Middle	4	24.90	24.90		7.09	7.09		30.31	30.31		95.0	95.1		6.61	6.62		5.16	5.17		3	
23/4/19	14:10	Fine	Middle	3	27.80	27.80	27.30	8.03	8.03	8.05	26.83	26.83	26.82	92.9	92.7	91.3	6.41	6.40	6.29	5.64	5.64	5.63	5	5.50
	14:12		Middle	3	26.80	26.80		8.07	8.07		26.80	26.80		90.0	89.4		6.20	6.16		5.65	5.57		6	
25/4/19	15:50	Fine	Middle	4	27.40	27.40	27.55	7.02	7.02	7.03	26.67	26.67	26.66	90.5	90.1	90.3	6.14	6.11	6.12	4.73	4.72	4.70	4	4.00
	15:52		Middle	4	27.70	27.70		7.04	7.04		26.64	26.64		90.2	90.4		6.11	6.12		4.68	4.65		4	
27/4/19	7:30	Cloudy	Middle	4	25.60	25.60	25.65	7.43	7.43	7.43	28.75	28.75	28.76	92.8	92.3	92.5	6.44	6.41	6.42	2.40	2.40	2.42	3	3.00
	7:32		Middle	4	25.70	25.70		7.42	7.42		28.77	28.77		92.4	92.5		6.41	6.42		2.49	2.40		3	
30/4/19	19:34	Cloudy	Middle	3	25.00	25.00	25.00	8.12	8.12	8.12	27.52	27.52	27.52	84.3	84.4	86.1	5.96	5.97	6.08	4.97	4.94	4.87	5	4.50
	19:35		Middle	3	25.00	25.00		8.12	8.12		27.52	27.52		87.4	88.2		6.17	6.23		4.91	4.65		4	

Remarks:
Single underline denotes exceedance over Action Level.
Double underline denotes exceedance over Limit Level.



Graphic Presentation of Water Quality Result of M5B - Central Cooling Water Intake Groups





Graphic Presentation of Water Quality Result of Culvert J - Reference Station

